



5,605 sq ft self-contained office building available  
with excellent amenities and stunning gardens



16 NEW SQUARE

## WELCOME TO THE ESTATE

Lincoln's Inn Estate is historic and prestigious showcasing a rich mix of architecture from elegant Tudor buildings to Georgian terraces, alongside contemporary offices and event spaces. Occupiers benefit from modern amenities including fully equipped meeting rooms, secure cycle storage, and 24-hour access.



Gardens



Great Hall



MCR Restaurant  
& Bar



Meeting Rooms



Library  
(for legal professionals)



Event Spaces



On-Site  
Management



24-Hour Access



Car Parking



Bike Racks



The Great Hall



New Square



MCR Restaurant & Bar





16 NEW SQUARE

## HEADQUARTERS OPPORTUNITY

Located within the prestigious Lincoln's Inn Estate, 16 New Square is a self-contained building providing 5,605 sq ft of high-quality office accommodation with its own secluded entrance. The building benefits from a welcoming reception, private offices, end of trip facilities, a seminar room and a private terrace. This unique building is arranged over three floors and is ready for an incoming occupier's fit-out.











16 NEW SQUARE



Indicative seminar room CGI

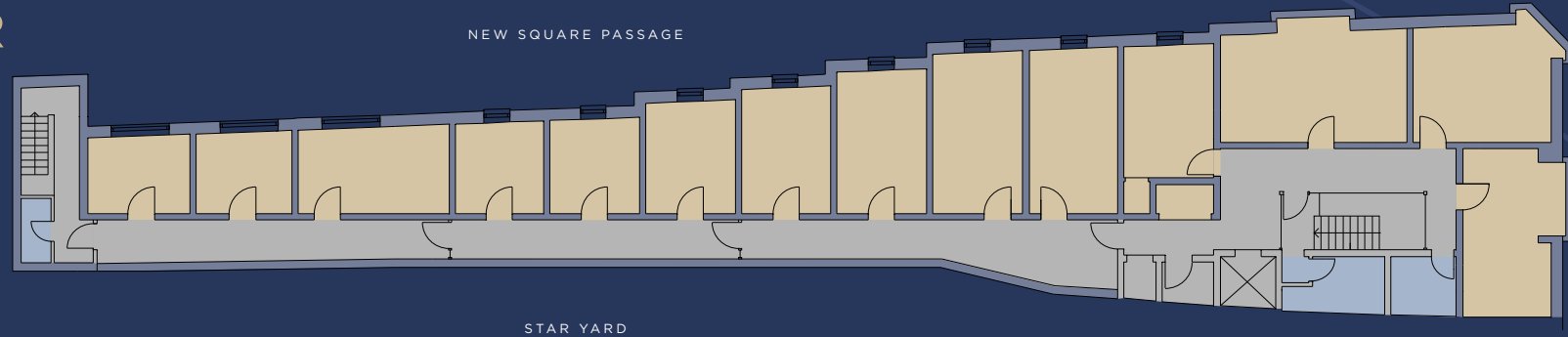


16 NEW SQUARE

## 1ST FLOOR

2,920 SQ FT

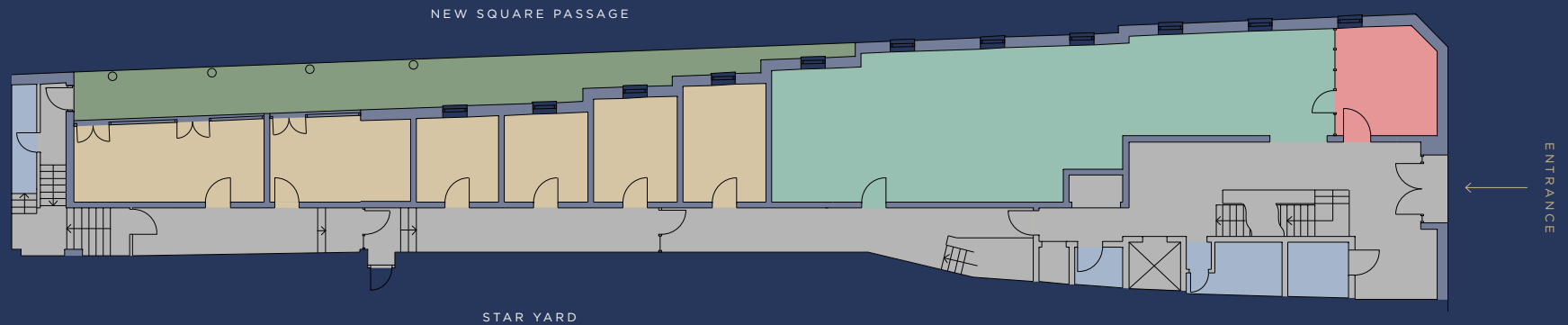
271.3 SQ M



## G FLOOR

1,917 SQ FT

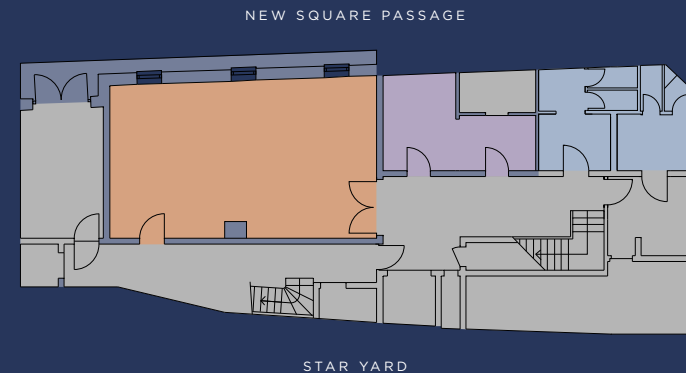
178.1 SQ M



## LG FLOOR

768 SQ FT

71.4 SQ M



- PRIVATE OFFICES
- RECEPTION AND OPEN PLAN OFFICES
- MEETING ROOM
- SEMINAR ROOM
- KITCHEN & STAFF ROOM
- CORE & CORRIDORS
- WCS & CHANGING FACILITIES
- TERRACE







16 NEW SQUARE



## VIBRANT MIDTOWN

Midtown is one of central London's most characterful districts, bringing together leisure, culture, and heritage in a vibrant setting. The area boasts an exceptional range of restaurants, pubs, shops, and hotels. With outstanding connectivity, Holborn, Chancery Lane, and Farringdon stations are all within easy walking distance, offering direct access to the Underground, Elizabeth Line, and Thameslink services.





---

**JAMES GILLETT**

[jgillett@savills.com](mailto:jgillett@savills.com)

07972 000 250

---

**ALEX TUGWELL**

[alex.tugwell@savills.com](mailto:alex.tugwell@savills.com)

07816 184 068

Important notice relating to the Misrepresentation Act 1967 and the Property Misdescriptions Act 1991: (i) the particulars are set out as a general outline only for guidance of intending purchasers or lessees and do not constitute, nor constitute part of, an offer or contract (ii) all descriptions, dimensions, references to condition and necessary permission for use and occupation, and other details are given in good faith and are believed to be correct, but any intending purchasers or occupiers should not rely on them as statements or representations of fact, but must satisfy themselves by inspection or otherwise as to the correctness of each of them. January 2026.

Marketing: Stuart Chapman Design